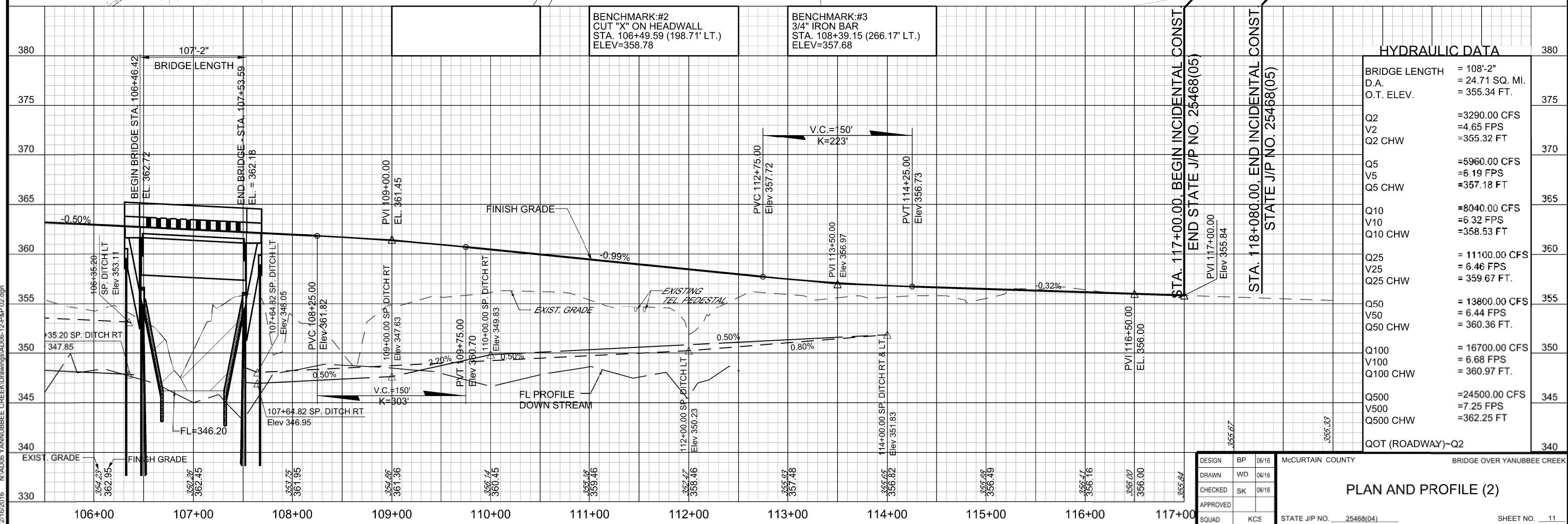
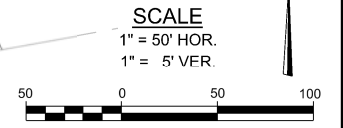
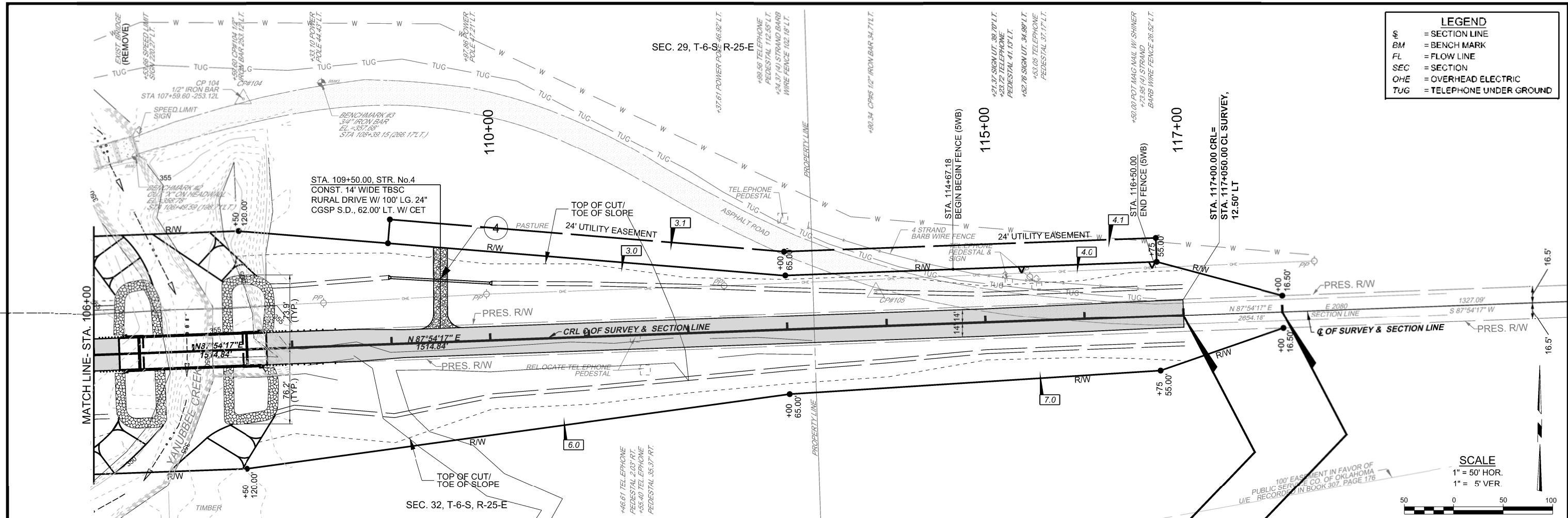


LEGEND	
66	= SECTION LINE
BM	= BENCH MARK
FL	= FLOW LINE
SEC	= SECTION
OHE	= OVERHEAD ELECTRIC
TUG	= TELEPHONE UNDER GROUND



HYDRAULIC DATA	
BRIDGE LENGTH	= 108'-2"
D.A.	= 24.71 SQ. MI.
O.T. ELEV.	= 355.34 FT.
Q2	= 3290.00 CFS
V2	= 4.65 FPS
Q2 CHW	= 355.32 FT
Q5	= 5960.00 CFS
V5	= 6.19 FPS
Q5 CHW	= 357.18 FT
Q10	= 8040.00 CFS
V10	= 6.32 FPS
Q10 CHW	= 358.53 FT
Q25	= 11100.00 CFS
V25	= 6.46 FPS
Q25 CHW	= 359.67 FT.
Q50	= 13800.00 CFS
V50	= 6.44 FPS
Q50 CHW	= 360.36 FT.
Q100	= 16700.00 CFS
V100	= 6.68 FPS
Q100 CHW	= 360.97 FT.
Q500	= 24500.00 CFS
V500	= 7.25 FPS
Q500 CHW	= 362.25 FT
QOT (ROADWAY)-Q2	

DESIGN	BP	06/16	McCURTAIN COUNTY	BRIDGE OVER YANUBBEE CREEK
DRAWN	WD	06/16		
CHECKED	SK	06/16		
APPROVED				
SQUAD	KCS		STATE J/P NO. 25468(04)	SHEET NO. 11

PLAN AND PROFILE (2)

12/16/2016 N:\AD06 YANUBBEE CREEK Drawings\AD06-12-P&P 02.dgn